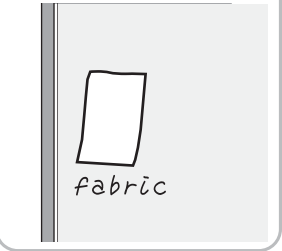


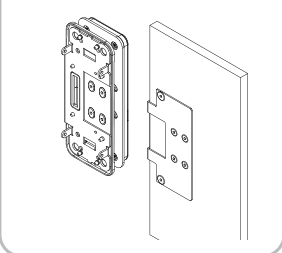
Installation Procedure

Condition
 Door Gap : 2.5mm~5mm
 Upside Door Deflection : 2mm

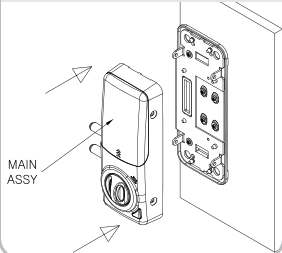
1
 Rub a installation face with a clean cloth or alcohols.



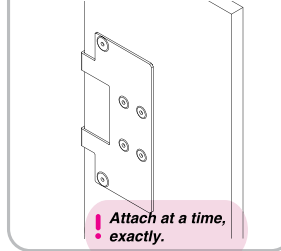
3
 Assemble a Front body and a install plate.



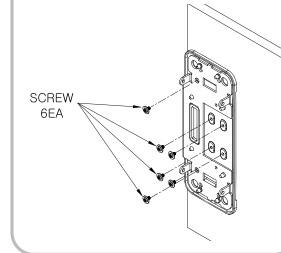
5
 Assemble a main body.



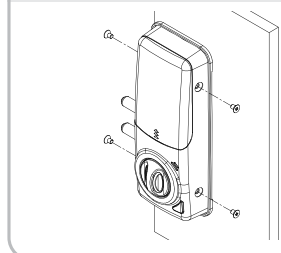
2
 Remove a double stick tape on the plate and Attach a plate on the door.



4
 Use all 6 screws to fix the front body up securely.

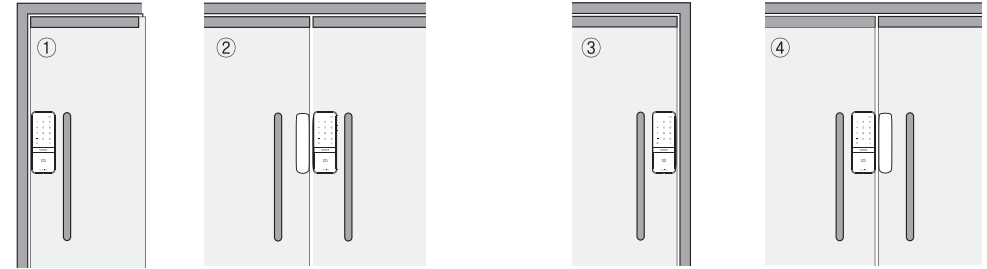


6
 Use all 4 screws to fix the main body up securely.



Factory default is right handed door

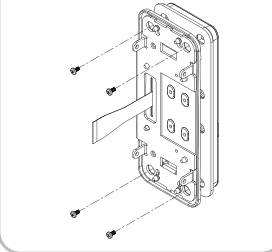
* In case of double door, strike side should be locked up.



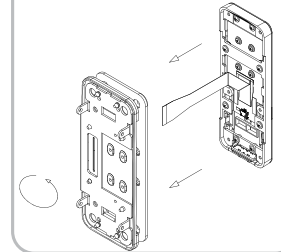
- ① Position for a single door (right handed door/Factory Default)
- ② Position for a double door (right handed door/Factory Default)
- Strike for a double door : Optional Accessory)
- ③ Left handed door (Default)
- ④ Position for a double door (left handed door)
- Strike for a double door : Optional Accessory)

Determine direction (to Right handed door)

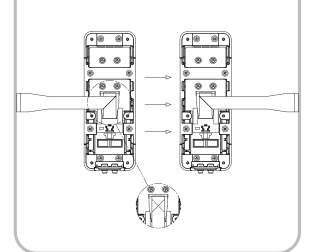
1 Front Ass'y disassembly



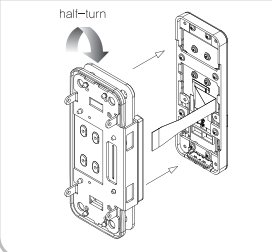
2 U-frame separation



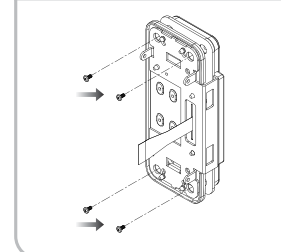
3 Determine direction of FPCB



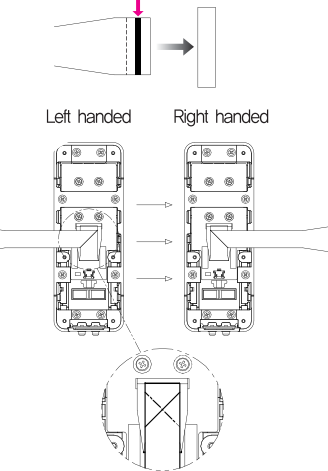
U-frame assembly



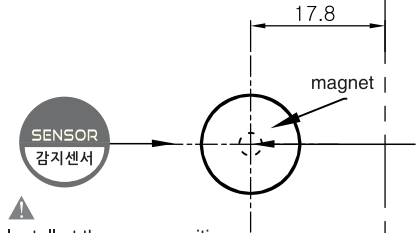
5 Front Ass'y Screw assembly



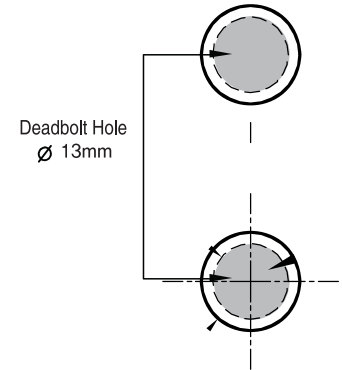
* FPCB should put into the connector by line (not dashed line)



▲ Upside
 (Default Right handed door)



▲ Install at the same position between sensor (product) and magnet



▼ Upside (left handed door)

▲ **Caution**
 In case of a left handed handle, Reverse this install guide line.

Check the Lock open&close after installation.
 Do not overpower a product.

Install guide line for a strike